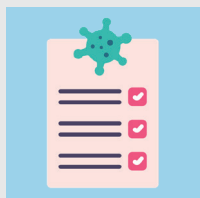


INFECTION PREVENTION AND CONTROL RECOMMENDATIONS



PROTECTING YOURSELF AND OTHERS WHILE IN THE FACILITY

Please follow the recommendations below to reduce the risk of exposure to and/or transmission of COVID-19 while in the facility. **No visit is without risk.** Continuing to take the following precautions remains vitally important.



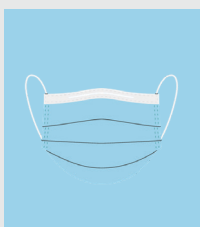
SOURCE CONTROL

- Masks are required when the Community Transmission Level is high.
- Please speak with a member of our team to learn more about the current Community Transmission Level and whether a mask is required.



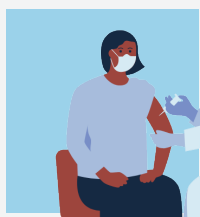
HAND HYGIENE

- Perform hand hygiene frequently!
- Be sure to perform hand hygiene before and after your visit.
- Avoid touching your eyes, nose, and mouth with unwashed hands.



USE OF PERSONAL PROTECTIVE EQUIPMENT (PPE)

- Please speak with a member of our team before entering the room of a resident on Transmission-Based Precautions (isolation or quarantine) to learn more about the necessary precautions to facilitate the safest visit possible!
- You may be asked to wear additional PPE in addition to your face mask.



GET UP TO DATE WITH COVID-19 VACCINATIONS!

- COVID-19 vaccines are safe, effective, and free!
- COVID-19 vaccines are effective in preventing symptomatic infection and may keep you from getting COVID-19!



PLEASE LIMIT OR DEFER NON-URGENT VISITATION IF YOU:

- Have tested positive for COVID-19 and have not completed a 10-day isolation, or
- Have symptoms of COVID-19. or
- Had recent close contact with someone who tested positive for COVID-19!



STAFF: Please notify your supervisor if you:

- Have tested positive for COVID-19,
- Have symptoms of COVID-19. or
- Had recent close contact with someone who tested positive for COVID-19.

Should you have questions or need further information about Infection Prevention and Control Recommendations, please ask to speak to a member of our team, call us at 800-291-5900, or visit www.aldennetwork.com.